

No more condensation after a shower or bath with **D'mista**

- Banish steamed-up mirrors – use in bathrooms and/or en-suites
- Easy installation – has self-adhesive backing with peel-off film
- Uniform clear surface – large surface area heating element
- Switch on for rapid demisting – special resistive heating element
- Minimal running costs – extra low-wattage heating element
- Will not overheat – self-regulating heating element
- Suits all wall-mounted mirrors – various size options
- Conforms to New Zealand and stringent European safety regulations – IEC60335-1, AS/NZS3000 AS/NZS3350.1-200

*Only to be used for its intended purpose i.e mirror demisting*



# D'mista

MIRROR DEMISTER

- Flat cold tail joint – allows for discreet fitting behind mirror
- 1.5 metre cold tail – provides ease of connection to mains supply
- Self-adhesive back – easy installation
- Tough ultra-thin (1mm thick) element – prevents creasing
- Large contact area for heating – rapid clearing of steam and condensation

Authorised Stockist:

ENERGY EFFICIENT PRODUCTS LTD CHRISTCHURCH [www.eepl.co.nz](http://www.eepl.co.nz)

E&OE

# D'mista

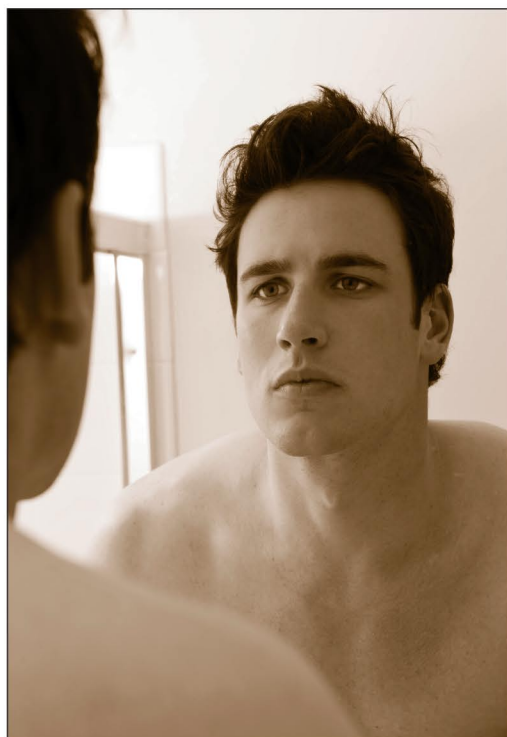
MIRROR DEMISTER







THE EUROPEAN SYSTEM FOR DEMISTING MIRRORS

# D'mista

MIRROR DEMISTER



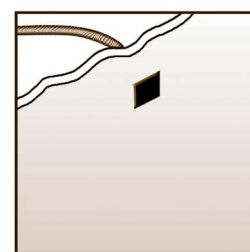
**D'mista** is an ultra-thin heating element (1mm thick) laminated between two layers of high-grade plastic, which guarantees maximum safety and reliability.

Termination Point	Size (mm)	Watts
	400 x 300	24
	500 x 400	38
	500 x 500	55
	1000 x 440	105

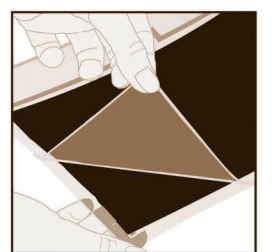
All dimensions are nominal

### SIMPLE INSTALLATION

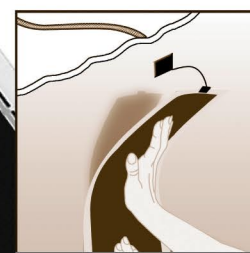
(instructions included in pack)



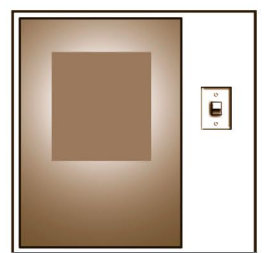
Position connection point to suit orientation of heating element



Clean wall surface and remove backing film from heating element



Press heating element onto the wall at the desired height



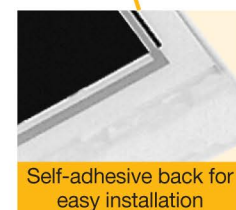
Control element usage with a light switch or a dedicated switch



Ultra-thin 1mm element to prevent creasing



Flat cold tail joint for discreet fitting



Self-adhesive back for easy installation



1.5m cold tail for permanent connection